

Church VIEW

St. Annes Road Willenhall

Specification

- Living/dining room with french doors to the garden
- Kitchen with built in stainless steel oven, hob & hood, integrated fridge-freezer, dishwasher & washing machine
- White sanitary ware with chrome taps
- Main bedroom with en-suite
- Family bathroom with bath and shower
- Built in wardrobes to all bedrooms
- Turfed front garden and turfed rear garden with patio area and close board fencing
- White PVCu double glazed windows and French doors
- High efficiency gas boiler heating with panel radiators
- Integral garage with door to hall
- 10 year Premier New Homes Warranty

THE LAPLEY

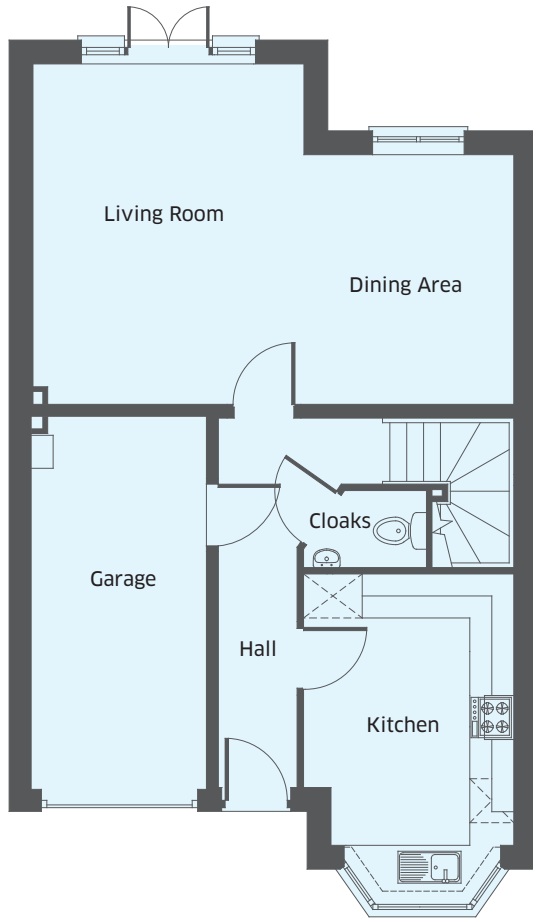
Four bedroom home



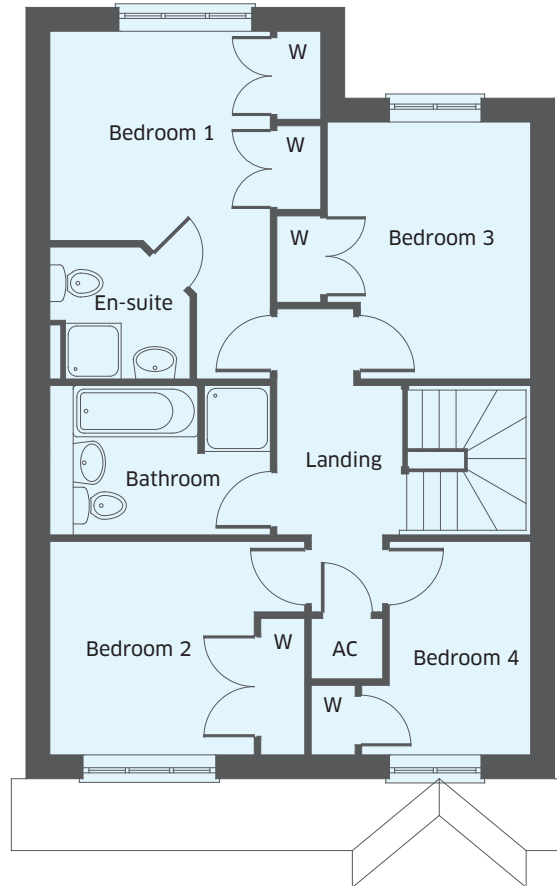
THE LAPLEY

Four bedroom home

Building quality homes
to be proud of...



Ground Floor



First Floor

Dimensions

| | | |
|----------------------|---------------|---------------|
| Kitchen | 3.70m x 2.87m | 12'2" x 9'5" |
| Living/Dining | 4.65m x 6.56m | 15'3" x 21'6" |
| Cloakroom | 1.05m x 1.67m | 3'5" x 5'6" |
| Bedroom 1 | 2.85m x 3.01m | 9'4" x 9'10" |
| En-suite | 1.80m x 1.91m | 5'11" x 6'3" |
| Bedroom 2 | 2.91m x 2.79m | 9'7" x 9'2" |
| Bedroom 3 | 3.50m x 2.77m | 11'6" x 9'1" |
| Bedroom 4 | 2.91m x 1.93m | 9'7" x 6'4" |
| Bathroom | 2.04m x 3.00m | 6'8" x 9'10" |