

Church VIEW

St. Annes Road Willenhall

Specification

- Living room with walk in bay
- Open plan kitchen with built in stainless steel oven, hob & hood, integrated fridge-freezer, dishwasher & washing machine and dining area with french doors to the garden
- Downstairs cloakroom
- White sanitary ware with chrome taps
- Main bedroom with en-suite
- Family bathroom with bath and shower
- Built in wardrobes to all bedrooms
- Turfed front garden and turfed rear garden with patio area and close board fencing
- White PVCu double glazed windows and French doors
- High efficiency gas boiler heating with panel radiators
- 10 year Premier New Homes Warranty

THE TRECOTT

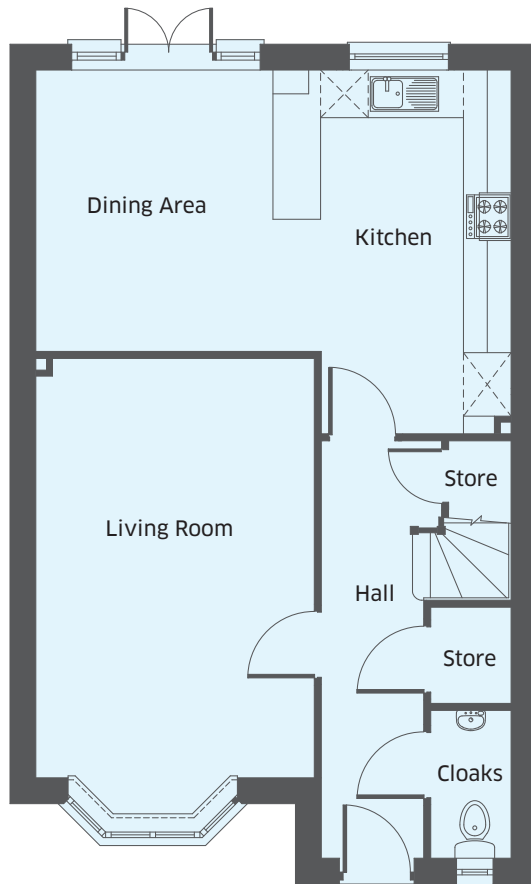
Four bedroom home



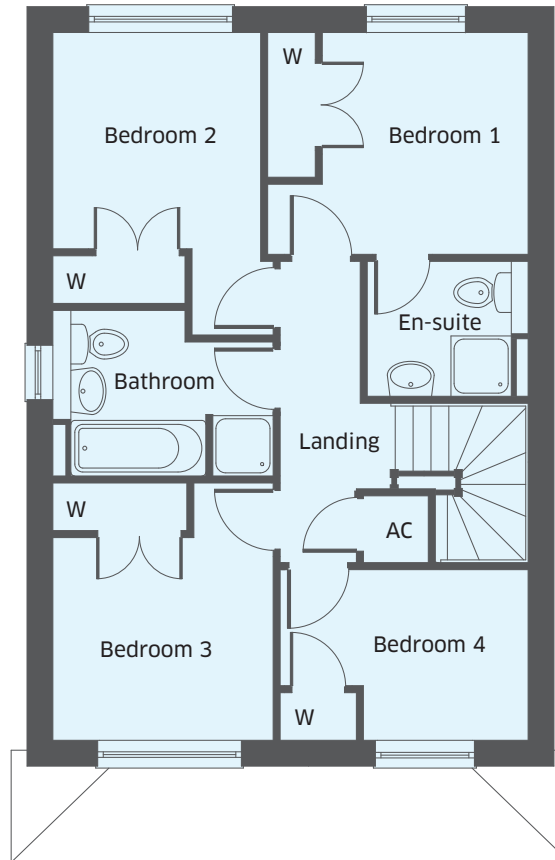
THE TRESCOTT

Four bedroom home

Building quality homes
to be proud of...



Ground Floor



First Floor

Dimensions

Kitchen/Dining	4.58m x 5.98m	15'1" x 19'8"
Living Room	5.28m x 3.50m	17'4" x 11'6"
Cloakroom	1.86m x 1.01m	6'1" x 3'4"
Bedroom 1	2.78m x 2.59m	9'2" x 8'6"
En-suite	1.70m x 2.03m	5'7" x 6'8"
Bedroom 2	2.73m x 2.62m	8'11" x 8'7"
Bedroom 3	2.55m x 2.78m	8'5" x 9'1"
Bedroom 4	2.15m x 3.12m	7'1" x 10'3"
Bathroom	2.08m x 2.78m	6'10" x 9'1"